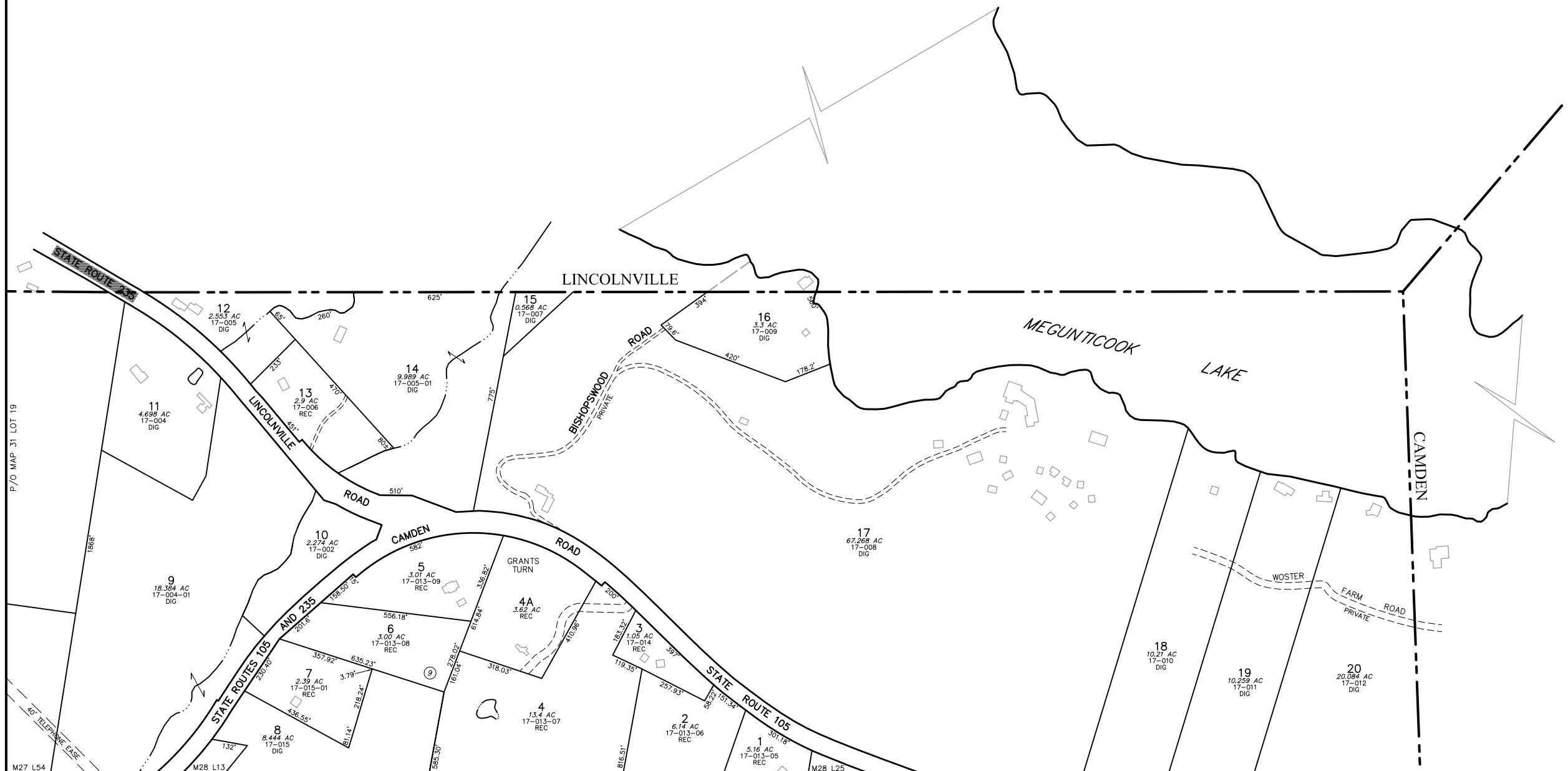
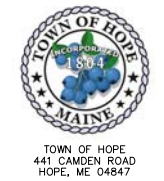


PREPARED BY:  
 AERIAL SURVEY AND PHOTO, INC.  
 546 AIRPORT ROAD, PO. BOX 659  
 NORRIDGEWICK, MAINE 04957  
 TEL: 207 634-2006 FAX 207 634-2008



P/O MAP 31 LOT 19  
 1688'  
 18.364 AC 17-004-01 DIG  
 4.698 AC 17-004 DIG  
 2.553 AC 17-005 DIG  
 2.9 AC 17-006 REC  
 9.989 AC 17-005-01 DIG  
 0.568 AC 17-007 DIG  
 3.3 AC 17-009 DIG  
 67.268 AC 17-008 DIG  
 10.21 AC 17-010 DIG  
 10.259 AC 17-011 DIG  
 20.064 AC 17-012 DIG  
 13.4 AC 17-013-07 REC  
 6.14 AC 17-013-06 REC  
 5.16 AC 17-013-05 REC  
 3.00 AC 17-013-08 REC  
 2.39 AC 17-015-01 REC  
 8.444 AC 17-015 DIG  
 3.07 AC 17-013-09 REC  
 3.62 AC REC  
 1.05 AC 17-014 REC  
 3.79'  
 357.92'  
 635.23'  
 218.24'  
 336.55'  
 132'  
 556.18'  
 552'  
 510'  
 625'  
 775'  
 336.82'  
 614.84'  
 161.04'  
 278.02'  
 318.03'  
 417.98'  
 119.35'  
 257.93'  
 151.34'  
 301.18'  
 188.32'  
 188.32'  
 397'  
 178.2'  
 420'  
 394'  
 38.6'  
 260'  
 470'  
 802'  
 158.00'  
 201.8'  
 230'  
 151'  
 230'  
 185'  
 260'

**NOTES:**  
 1) THIS MAP IS FOR ASSESSMENT PURPOSES ONLY. AND IS NOT INTENDED FOR LEGAL DESCRIPTION. PLEASE REFER TO FULL DISCLAIMER ON INDEX MAP.  
 2) REC = PARCEL ACREAGE FROM RECORDED PLAN OR DEED  
 DIG = PARCEL ACREAGE CALCULATED DIGITALLY



PARCEL NUMBER .....	74
PARCEL DIMENSION .....	161.21'
PARCEL AREA .....	2.456 AC
OLD MAP AND LOT NUMBER ..	10-041-01
MATCH LABEL .....	P/O MAP 20 LOT 24
BUILDING FOOTPRINT .....	
SUBDIVISION LOT NUMBER .....	

**MAP LEGEND**

PARCEL BOUNDARY.....	
ROAD RIGHT OF WAY.....	
PAPER STREET .....	
EASEMENT LINE.....	
PRIVATE RIGHT OF WAY .....	
WETLAND EDGE .....	
WATER LINE .....	

APRIL 1, 2011  
 SCALE 1 INCH = 200 FEET  
 200 100 0 200 400 600 FEET  
 MAINE STATE PLANE COORDINATE GRID; EAST ZONE; NAD 1983; US FEET  
 PHOTOGRAPHY DATE: MAY 7, 2007  
 PHOTOCGRAMMETRIC COMPILATION BY AERIAL SURVEY AND PHOTO, INC.  
 PARCEL MAP COMPILATION BY AERIAL SURVEY AND PHOTO, INC.

**INDEX DIAGRAM**

LINCOLNVILLE		CAMDEN
31	32	
27	28	

PROPERTY MAP  
**TOWN OF HOPE**  
 KNOX COUNTY, MAINE